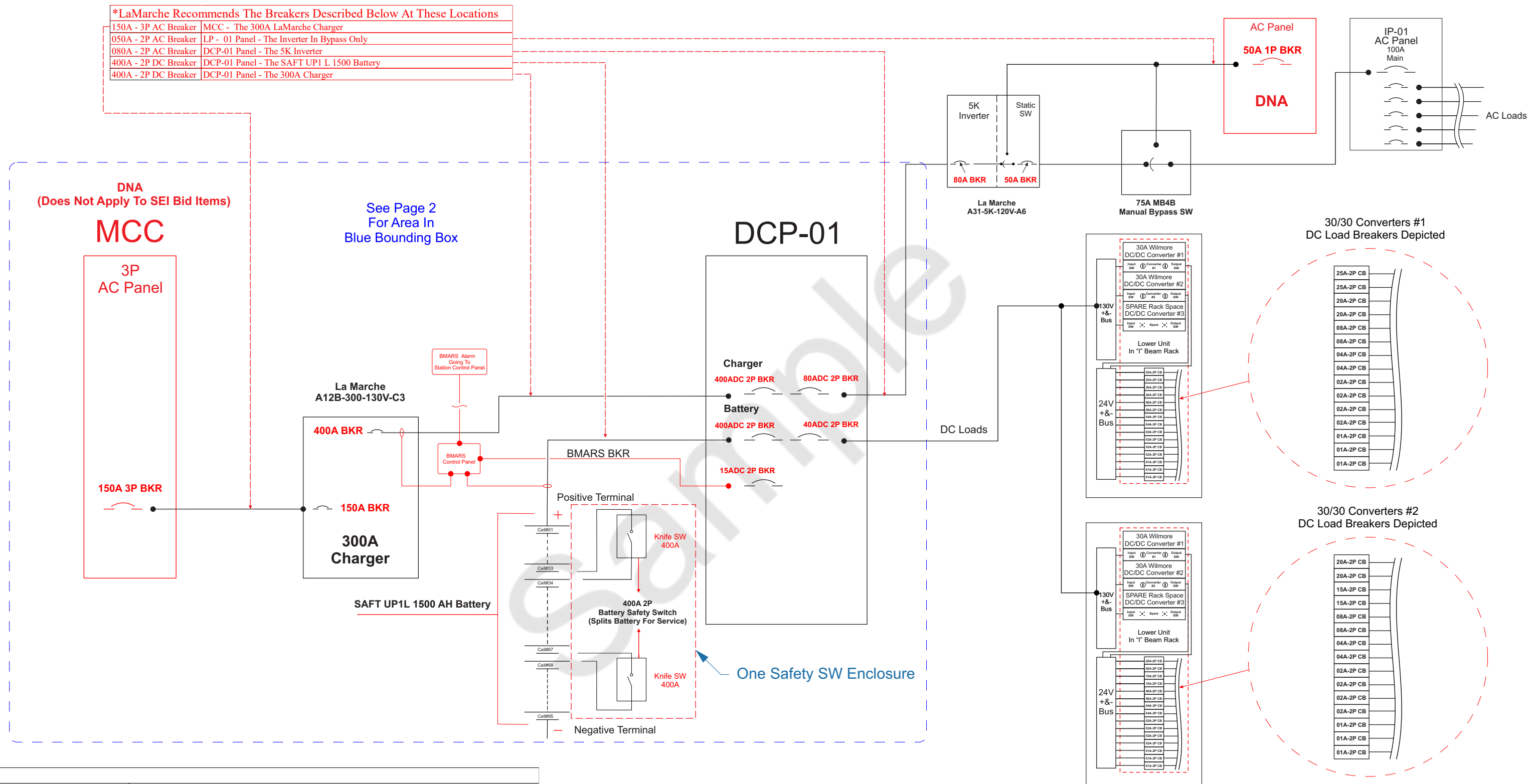


*** PLEASE NOTE ***

*LaMarche Recommends The Breakers Described Below At These Locations

| | |
|----------------------|---------------------------------------------|
| 150A - 3P AC Breaker | MCC - The 300A LaMarche Charger |
| 050A - 2P AC Breaker | LP - 01 Panel - The Inverter In Bypass Only |
| 080A - 2P AC Breaker | DCP-01 Panel - The 5K Inverter |
| 400A - 2P DC Breaker | DCP-01 Panel - The SAFT UP1 L 1500 Battery |
| 400A - 2P DC Breaker | DCP-01 Panel - The 300A Charger |



NOTES:

| | |
|--------------------------------|---------------------------------------------------------------------------|
| 1 MCC Recommendations | 150A Charger Breaker |
| 2 Charger | LaMarche A12B-300A-130VDC-C3 |
| 3 Battery | Saft UP1 L 1500-1 cell (95 ea. 1-cell blocks) (95 Total Cells) |
| 4 Battery Enclosure | 210" L x 48" D x 112" H 3- Units (70" L x 51" D x 112" H) Bolted Together |
| 5 Battery Safety SW | 400A (One Enclosure Used To Divide The Battery Into Three Sections) |
| 6 DC Panel Recommendations | 400A Charger Breaker-400A Battery Breaker-15A BMARS BKR |
| 7 Inverter | 5K Inverter |
| 8 DC/DC Converter System | (2) Wilmore Converters 30/30 ADC In Enclosures On "I" Beam Rack |
| 9 DC/DC Converter System-IP-01 | IP-01 Panel Mounted On DC/DC Converter Rack Above 30A Converter Enclosure |
| 10 30/30 ADC Converter | 40ADC Maintenance Disconnect Breaker In DCP-01 |
| 11 BMARS | Conduit For BMARS Alarm Signal Going To The Station Desk |

STANDBY ENERGY
14134 CASTOR ST.
TOMBALL, TX 77375

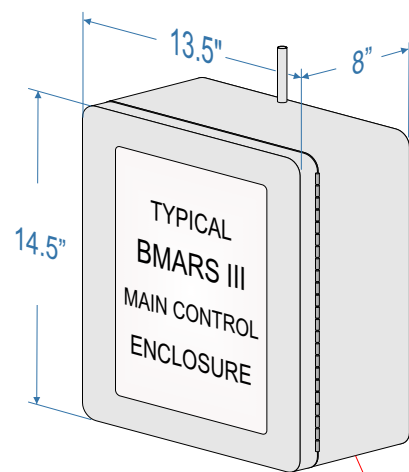
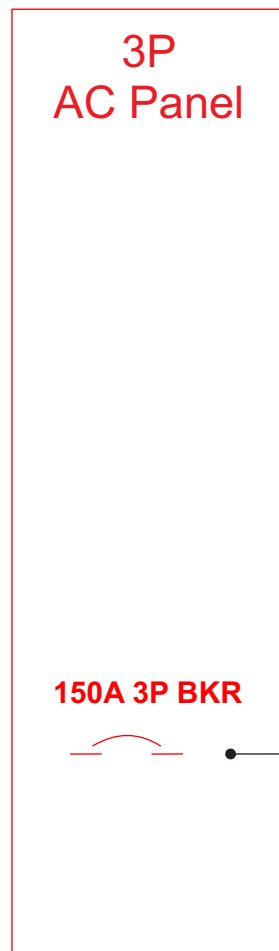
UPS System One Line

DRAWING # **Q# Rev-0**

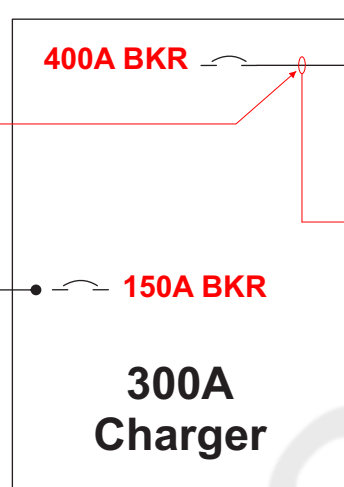
SCALE: **NTS** B.R.V. SHEET: **1 of 2**

DNA
(Does Not Apply To SEI Bid Items)

MCC



La Marche
A12B-300-130V-C3



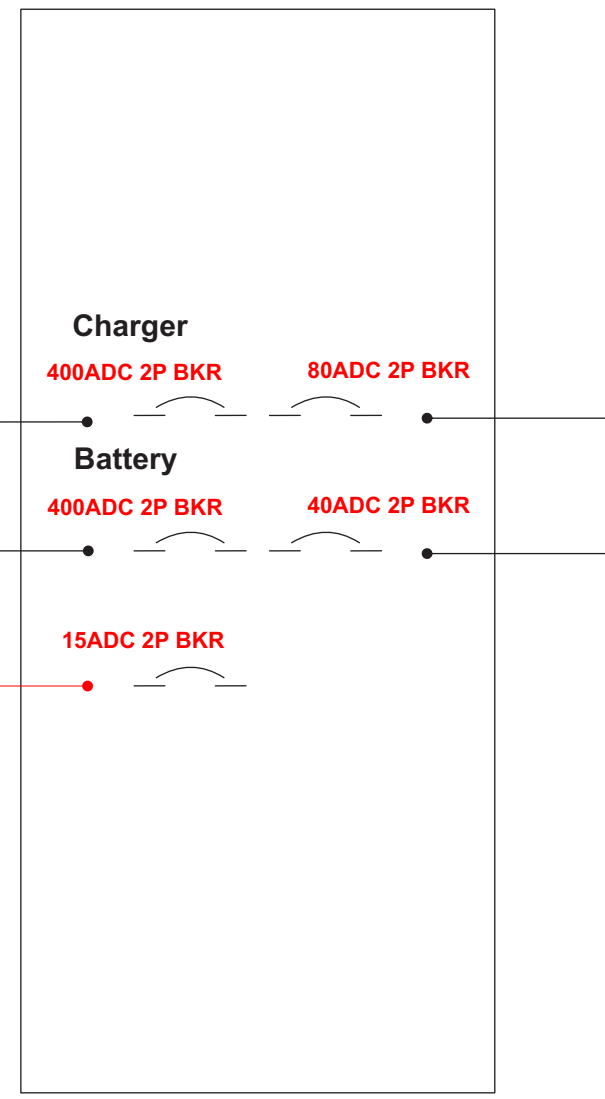
BMARS Sensor 1
Placed On The Positive
Charger DC Output Conductor With The
Arrow Toward The DCP-01 Distribution Panel

BMARS Alarm
Going To
Station Control Panel

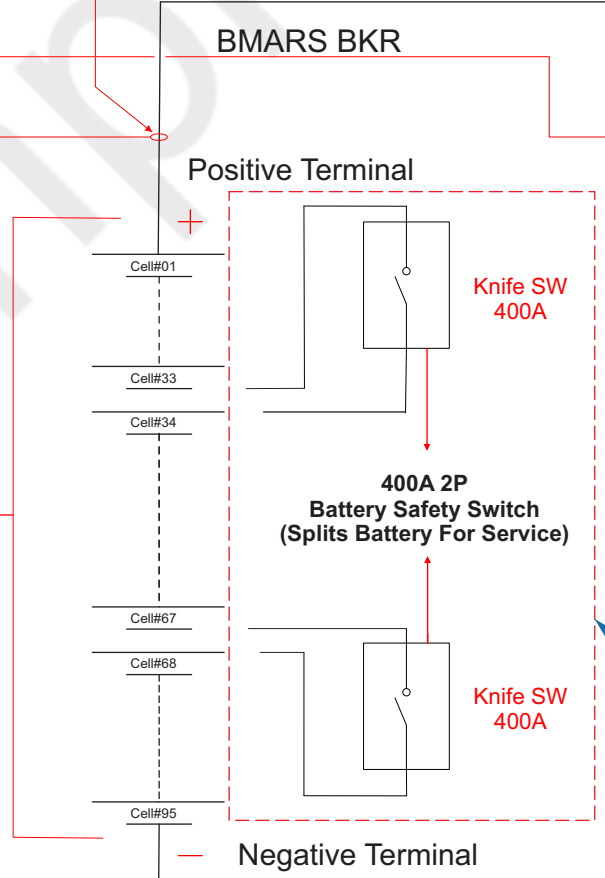


BMARS Sensor 2
Placed On The Positive
Battery Conductor At Cell #1
With The Arrow Toward The DCP-01 Distribution Panel

DCP-01

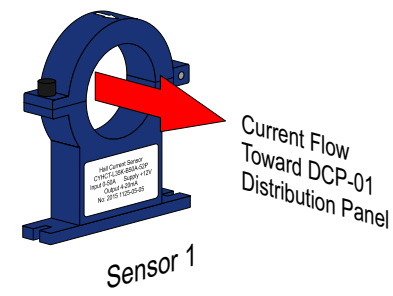


SAFT UP1L 1500 AH Battery

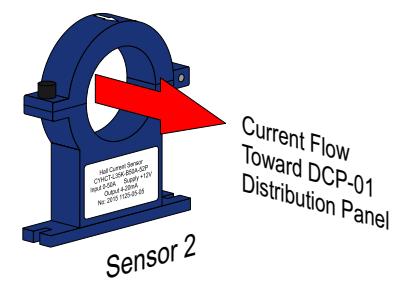


One Safety SW Enclosure

Hall Effects Sensor Cables Going Back To The BMARS Main Control Enclosure



Hall Effects On The Positive DC Output Conductor
Of The Charger With The Arrow Pointing Toward
The DCP-01 Distribution Panel



Hall Effects On The Positive Input Conductor To The Battery
With Arrow Pointing Toward The DCP-01 Distribution Panel



STANDBY ENERGY
14134 CASTOR ST.
TOMBALL, TX 77375

UPS System One Line

DRAWING # Q# Rev-0

SCALE: NTS

B.R.V.

SHEET: 2 of 2