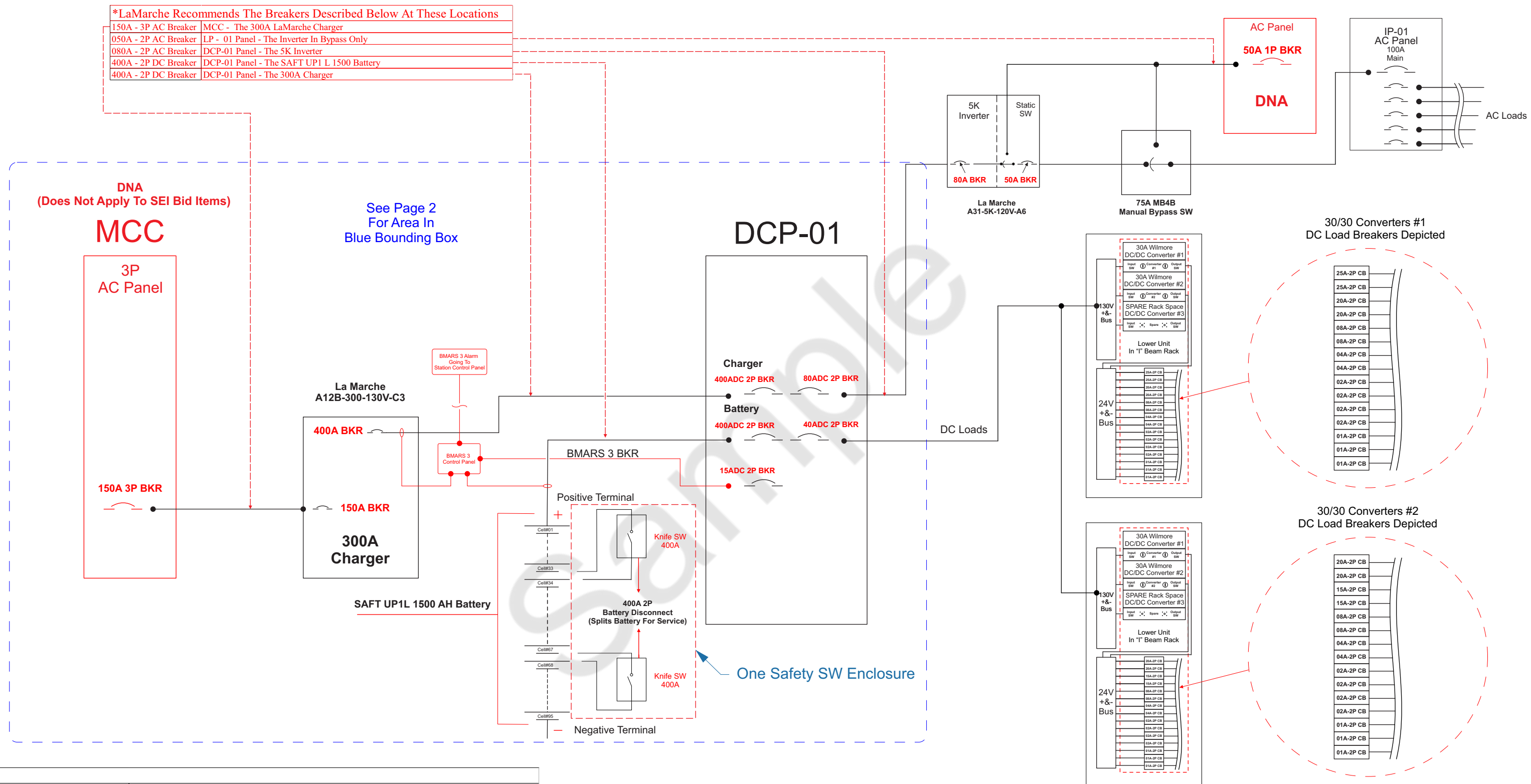


*** PLEASE NOTE ***

*LaMarche Recommends The Breakers Described Below At These Locations

150A - 3P AC Breaker	MCC - The 300A LaMarche Charger
050A - 2P AC Breaker	LP - 01 Panel - The Inverter In Bypass Only
080A - 2P AC Breaker	DCP-01 Panel - The 5K Inverter
400A - 2P DC Breaker	DCP-01 Panel - The SAFT UP1 L 1500 Battery
400A - 2P DC Breaker	DCP-01 Panel - The 300A Charger



NOTES:

1	MCC Recommendations	150A Charger Breaker
2	Charger	LaMarche A12B-300A-130VDC-C3
3	Battery	Saft UP1 L 1500-1 cell (95 ea. 1-cell blocks) (95 Total Cells)
4	Battery Enclosure	210" L x 48" D x 112" H 3- Units (70" L x 51" D x 112" H) Bolted Together
5	Battery Safety SW	400A (One Enclosure Used To Divide The Battery Into Three Sections)
6	DC Panel Recommendations	400A Charger Breaker-400A Battery Breaker-15A BMARS 3 BKR
7	Inverter	5K Inverter
8	DC/DC Converter System	(2) Wilmore Converters 30/30 ADC In Enclosures On "I" Beam Rack
9	DC/DC Converter System-IP-01	IP-01 Panel Mounted On DC/DC Converter Rack Above 30A Converter Enclosure
10	30/30 ADC Converter	40ADC Maintenance Disconnect Breaker In DCP-01
11	BMARS 3	Conduit For BMARS 3 Alarm Signal Going To The Station Desk



STANDBY ENERGY
14134 CASTOR ST.
TOMBALL, TX 77375

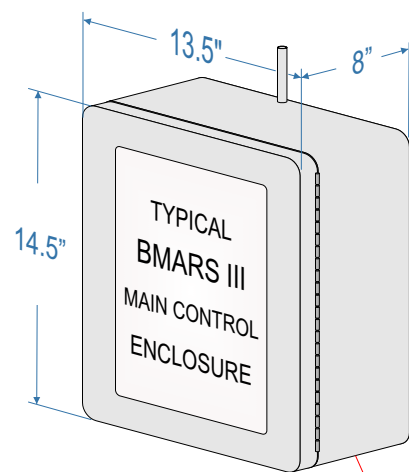
UPS System Interconnect

DRAWING # **Q# Rev-0**

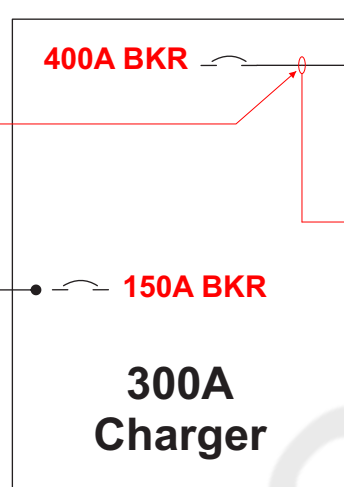
SCALE: **NTS** B.R.V. SHEET: **1 of 2**

DNA
(Does Not Apply To SEI Bid Items)

MCC



La Marche
A12B-300-130V-C3



BMARS 3 Sensor 1
Placed On The Positive
Charger DC Output Conductor With The
Arrow Toward The DCP-01 Distribution Panel

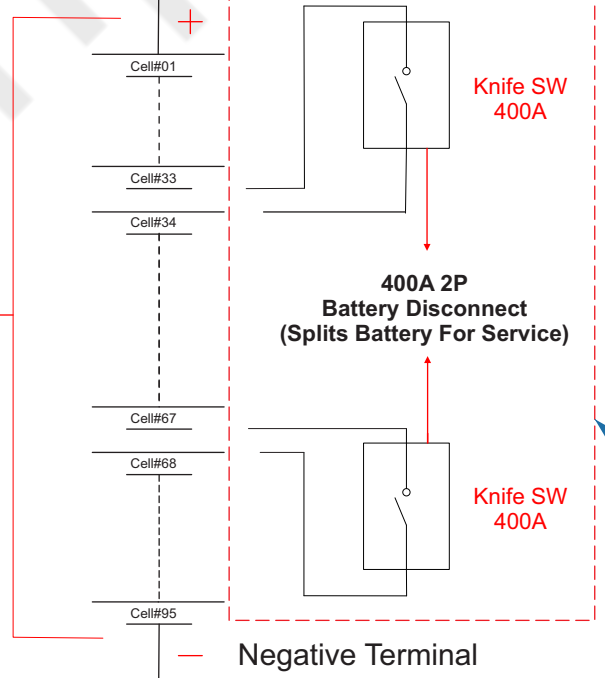
BMARS 3 Alarm
Going To
Station Control Panel

BMARS 3 Sensor 2
Placed On The Positive
Battery Conductor At Cell #1
With The Arrow Toward The DCP-01 Distribution Panel

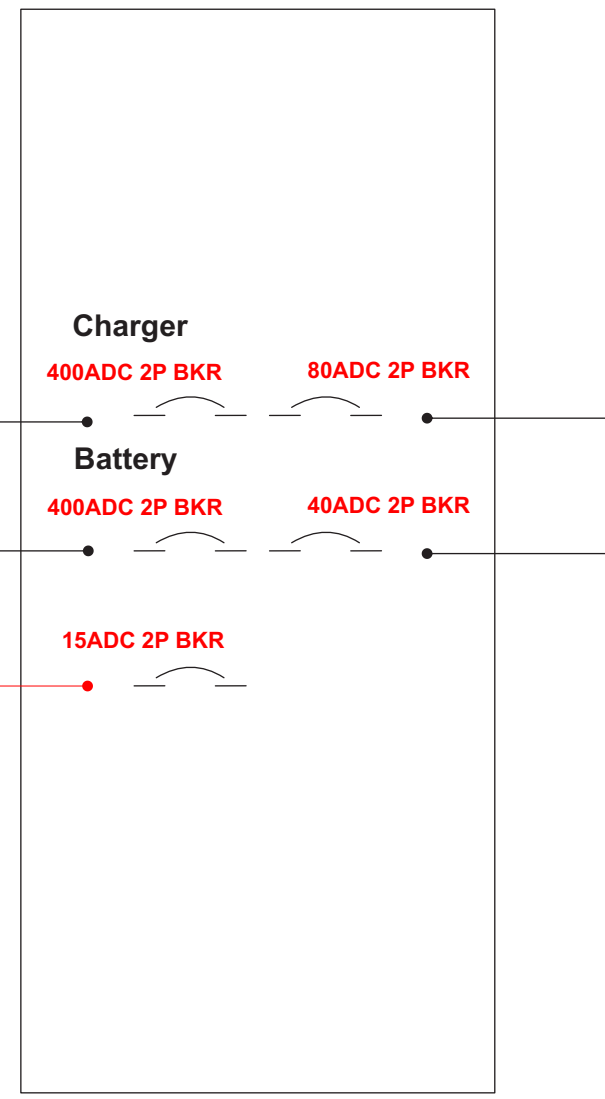
BMARS 3
Control Panel

BMARS 3 BKR

Positive Terminal

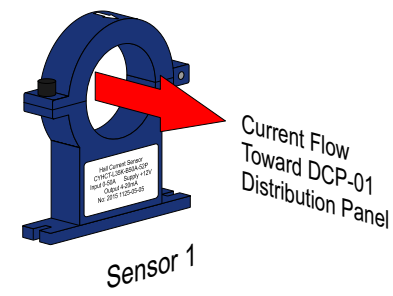


DCP-01

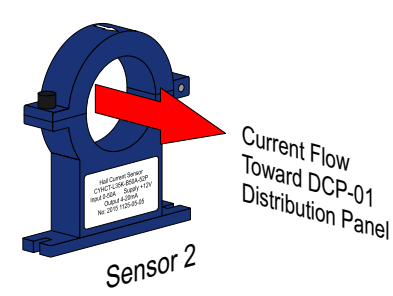


One Safety SW Enclosure

Hall Effects Sensor Cables Going Back To The BMARS 3 Main Control Enclosure



Hall Effects On The Positive DC Output Conductor
Of The Charger With The Arrow Pointing Toward
The DCP-01 Distribution Panel



Hall Effects On The Positive Input Conductor To The Battery
With Arrow Pointing Toward The DCP-01 Distribution Panel

SAFT UP1L 1500 AH Battery



STANDBY ENERGY
14134 CASTOR ST.
TOMBALL, TX 77375

UPS System Interconnect	
BMARS 3 Interconnect In Blue Bounding Box	
DRAWING # Q# Rev-0	
SCALE: NTS	SHEET: 2 of 2
B.R.V.	